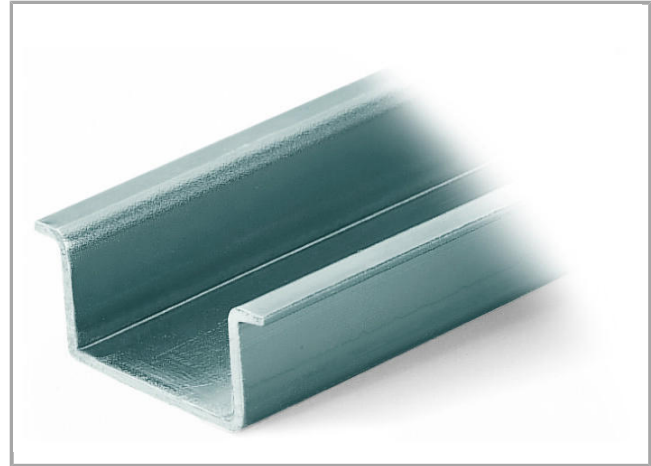
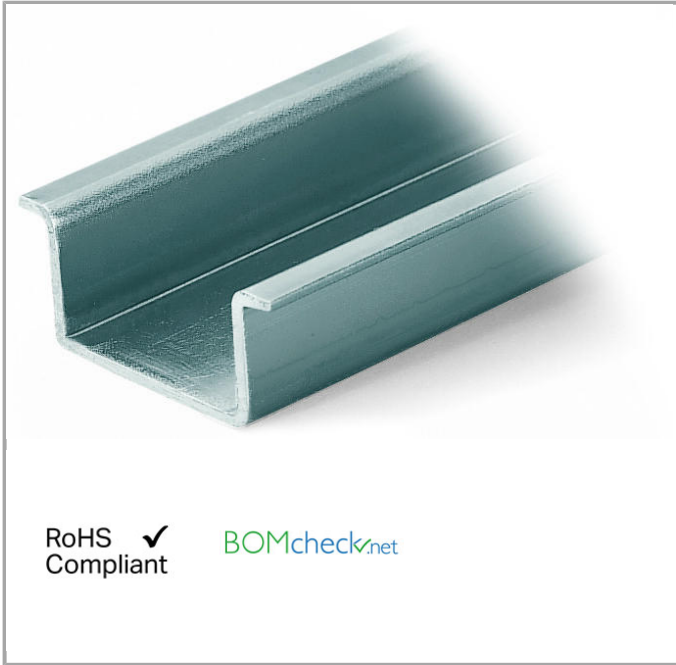


Data sheet | Item number: 210-114

Steel carrier rail; 35 x 15 mm; 1.5 mm thick; 2 m long; unslotted; similar to EN 60715



210-114



RoHS Compliant [BOMcheck.net](https://www.bomcheck.net)

Data

Technical Data

Main product function

Mounting Accessories

Geometrical Data

Abmessungen B x H x T (mm)	(2000 x 15 x 35) mm
Abmessungen B x H x T (inch)	(78.74 x 0.591 x 1.378) inch
Width	2,000 mm / 78.74 inch
Height	15 mm / 0.591 inch
Depth	35 mm / 1.378 inch

Material Data

Weight	1325 g
--------	--------

Commercial data

Product Group	2 (Terminal Block Accessories)
Country of origin	IT
GTIN	4017332277174
Customs Tariff No.	72169180000


Compatible products


Marking accessories


	Item no.: 210-708 Labels; for TP printers	210-708
--	---	---------


	Item no.: 210-808 Labels; for Smart Printer	210-808
--	---	---------

assembling

	Item no.: 209-137 Mounting adapter; can be used as end plate; 6.5 mm wide	209-137
--	---	---------

	Item no.: 249-116 Screwless end stop; 6 mm wide; for DIN-rail 35 x 15 and 35 x 7.5	249-116
--	--	---------

	Item no.: 249-117 Screwless end stop; 10 mm wide; for DIN-rail 35 x 15 and 35 x 7.5	249-117
--	---	---------

	Item no.: 249-197 Screwless end stop; 14 mm wide; for DIN-rail 35 x 15 and 35 x 7.5	249-197
--	---	---------

Downloads

Documentation

Bid Text

210-114	doc 24.1 kB	Download
---------	----------------	----------

CAD/CAE - Smart Data

CAD data

3D Download 210-114	URL	Download
---------------------	-----	----------

Subject to changes.